



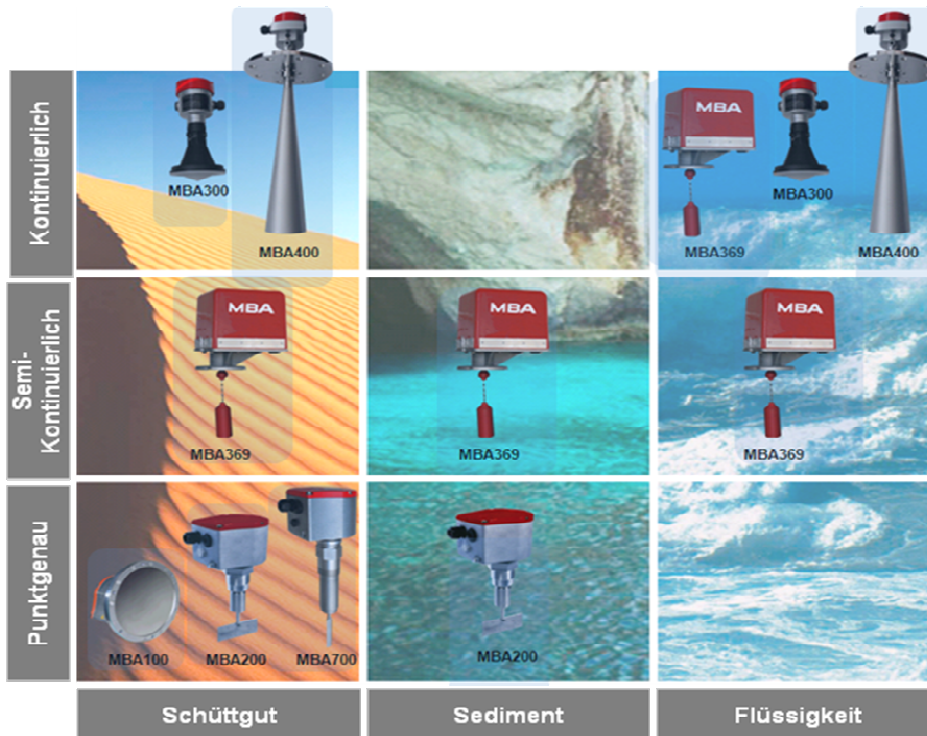
Ambt Delden, 29 May 2011

We used to apply our motto “Measuring is Knowing” when talking about our maintenance management package BopV5, but this time we really do mean measuring. Since 1 January 2011, KEMP has been representing **MBA instruments GmbH** in the BENELUX.

MBA was created in 2008 by a spin-off from SICK-Maihak Group. In the first instance, it was all about rotating vane switches, previously known under the brand name MAIHAK. “**MBA**” also stands for “**M**aihak **B**ehälter **A**nzeiger”. The rotating vane switches from MBA can take on any challenge in terms of:

- Process pressure -0.5 to +10 bar
- Process temperature -30 to +800 degrees Celsius
- Ambient temperature -45 to +60 degrees Celsius
- ATEX zone 20/20 and 20/21

In addition, this switch can be supplied in very many variants for vertical or horizontal position, but also customer-specific in every conceivable angle. Besides this level switch, we meanwhile also have various level measuring options as you can see in the overview below.



Apart from radar measurements, there are also oscillating vane measurement and plumb line systems. In other words, a made-to-fit solution for practically any measuring task. Please get in touch with us for detailed information.

Besides caring about quality and safety, caring for the environment is also a top priority for Cementbouw. At its Van Hesteren Betonmortel operation in Tiel, the old filters on the cement silos no longer met the requirements placed on them today. Based on its own experience and quality studies, Cementbouw has opted for the high-quality filters from **WAM**: initially for four silos, the often used "Silotop" with a filter surface area of 24 m², suitable for loading from bulk trucks. A "WAMAIR HR70" with a surface area of 70 m² has been installed for the silo intended for unloading from ships.

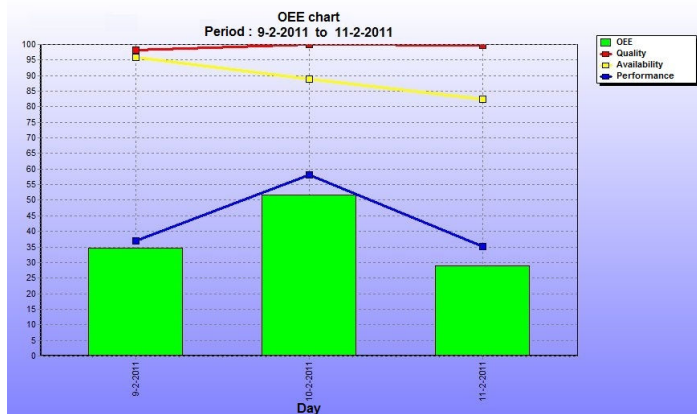
KEMP was delighted at the beginning of this year to obtain the contract to deliver and install these new filters. In the week of 21 March, the work could be carried out in ideal weather conditions and all filters were replaced and tested without disrupting the production. With them, Van Hesteren Betonmortel is fit for the future again.



Our partner Pelders Maintenance Management is installing the OEE Tracker on no fewer than 8 machines at one of our customers. OEE stands for Overall Equipment Effectiveness.

That decision was taken because our customer wanted to put an end to excessively low production levels in his company and the associated - excessively high - costs. Without taking action, the company would have wound up in a vicious circle with steadily aging machines, because the payback time of the capital invested in machines is longer than expected and is getting in the way of essential innovations.

At this customer, operators are working every day with machines than come nowhere close to achieving their design speed. Those very same operators saw possibilities to improve the machines. Our customer wanted to tackle the proposed improvements in a structural way. Make the effect of ideas and adjustment visible. For that reason, our customer chose to make the OEE of his machines visible in a structural way in order to give direction to his improvement efforts.

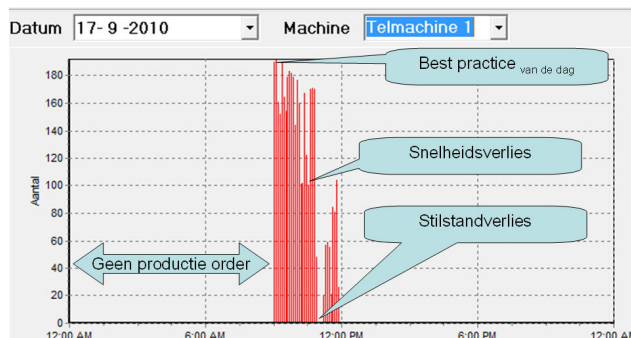


OEE shows employees the losses per machine and per production line, but also where, when and why those losses occur.

OEE = Availability level x Performance level x Quality level.

Imagine a machine or production line of world class. So one with a really high OEE that reads something like: 90%

availability level with 95% performance level and 99.5% quality level. That results in an OEE of 85%.



Our OEE Tracker shows your employees the good moments your machines have and uses those moments to challenge them. Your machines can suddenly do more. The OEE Tracker shows the best speeds your machines put in on a regular basis. What's more, the OEE Tracker shows the losses that employees can influence in concrete terms. Want to know more about OEE? Or a demonstration with the OEE Tracker? Call or e-mail us for an appointment.

Interested in our activities? Call us for an appointment without obligation or a demo of the OEE Tracker (+31-74-2914023).

Frans Kruse
Director